



LAFD COMMAND REFERENCE ADDENDUMS

- o LAFD – F-666
- o MCI Reference
- o Hazardous Materials Reference
- o Active Shooter Reference
- o Metro Rail Reference
- o Technical Rescue Reference
- o Event Medical Incident Log



HAZARDOUS MATERIALS REFERENCE

INCIDENT COMMANDER

Information Officer

Safety Officer

Liaison Officer

Assistant Safety officer

FINANCE SECTION CHIEF

OPERATIONS SECTION CHIEF

AIR OPERATIONS

STAGING AREA MANAGER

MASS DECON

FIRE DIVISION

EVACUATION GROUP

HAZARDOUS MATERIALS GROUP

RAPID EXTRACTION TEAM

MEDICAL GROUP

GROSS DECON UNIT

SECONDARY DECON UNIT

MONITORING UNIT

OUTSIDE AGENCIES

SECONDARY SAFE REFUGE UNIT

PERIMETER CONTROL AND ACCESS

SITE CONTROL TEAM

SAFE REFUGE AREA

ENTRY TEAM

PRIMARY ENTRY TEAM

BACK UP ENTRY TEAM (R.I.T.)

TECHNICAL SUPPORT TEAM

RESCUE UNIT

PARAMEDIC ENGINE

TECHNICAL DECON TEAM

- RAPID EXTRACTION: _____ INITIAL ISOLATION ZONE
- RAPID ASSESSMENT: _____
- MASS DECON GROUP: _____ EVACUATION DISTANCE
- FIRE GROUP: _____
- EVACUATION GROUP: _____ SAFE REFUGE AREA
- HAZ MAT GROUP: _____
- RAPID INTERVENTION: _____
- MEDICAL GROUP: _____
- SAFETY: _____

Exclusionary (Hot) Zone

HazMat Entry Team
Level A PPE



Identify secondary devices or other hazards
Triage & tag non-ambulatory victims as Immediate and Delayed
Extract victims on decon litters or in stokes baskets (hand off to Decon Unit members in Level B PPE)
Identify agent and collect samples

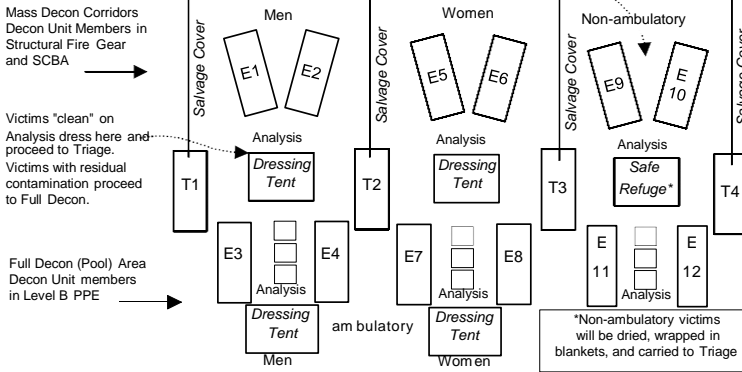
Mass Casualty
VICTIM DECONTAMINATION
Chemical/Radiological
WMD Incident

Contamination Reduction (Warm) Zone

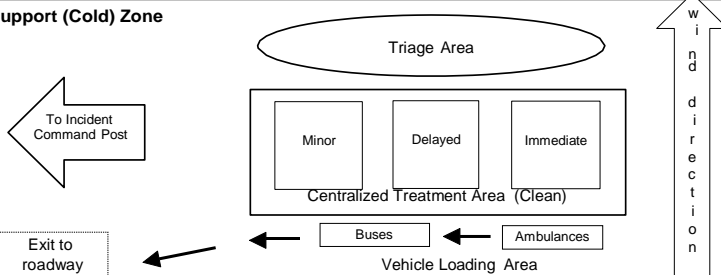
Primary/Technical Decon for Responders and Equipment by Decon Unit members in Level B PPE

26

Clothing removal/ bag belongings/ triage tags at the beginning of each corridor



Support (Cold) Zone





LAFD ACTIVE SHOOTER REFERENCE

Initial Responsibilities

- D Confirm nature of threat and posture of Law Enforcement (LE)
- D Co-locate and establish Unified Command (Law/Fire)
- D Establish a communications plan
- D Confirm and define Operational Zones (Hot, Warm, and Cold), use a map
- D Establish information flow with LE
- D Develop Rescue Task Force(s) (RTF) in preparation for Rapid Extraction with LE
- D Assign Medical Group Supervisor and establish Medical Treatment Areas and Transport capabilities
- D Define incident perimeter and update MFC or consider establishing a Tactical Area
- D Confirm/Request Tactical Emergency Medical Specialists (TEMS)

Key Incident Components

1. Rescue Group – Rescue Task Forces to operate within the “Warm Zone” for extracting viable patients
2. Medical Group – Configured to manage triage, treatment and transportation of casualties (Consider a Medical Branch if multiple groups are necessary)
3. Fire Group – Configured to manage fire or non-EMS related needs (Consider Haz-Mat and US&R Group)
4. Communications Plan – Ensure both law and fire establish an effective method for proper communications (Consider a common Command Channel UHF)

Resource Assignments

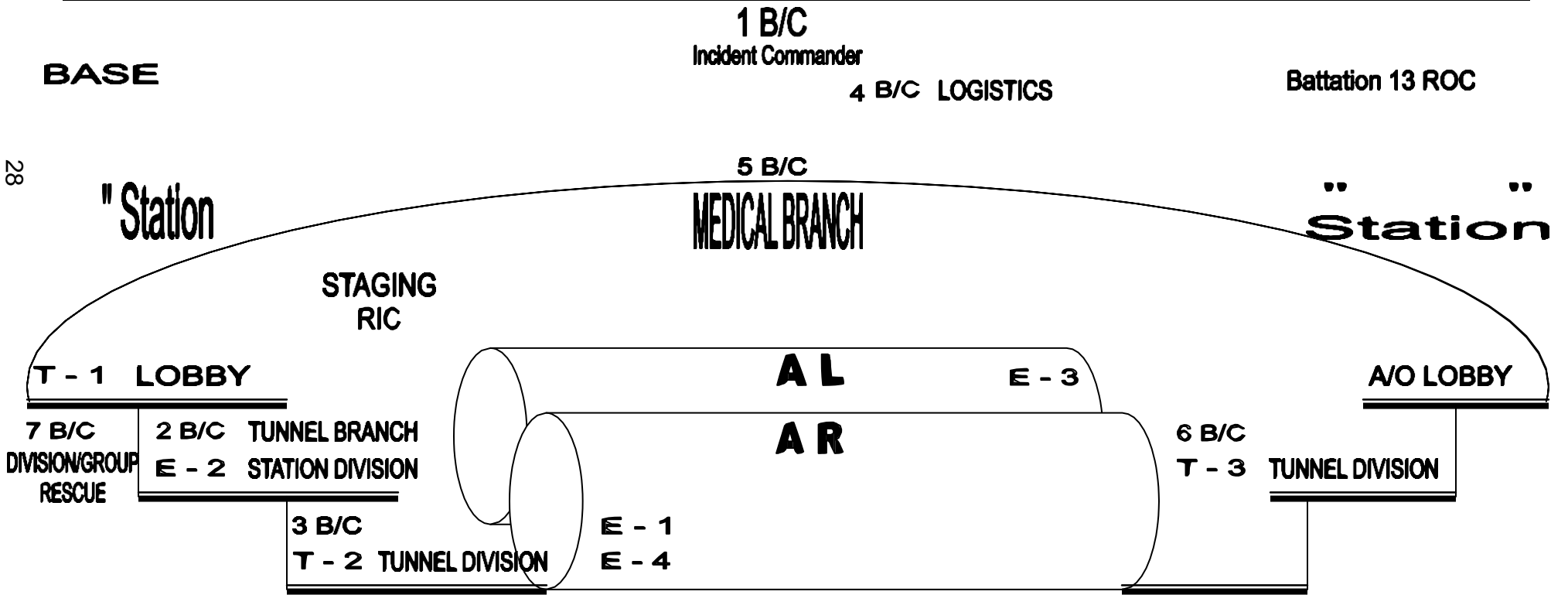
- (2) Battalion Chiefs – 1st as IC/UC, 2nd as Rescue Group Supervisor
- (2) EMS Battalion Captains – 1st to Medical Communications, 2nd to Medical Group Supervisor
- (1) Command Post Company – to ICP
- (1) Light Force – Treatment Areas
- (2) Engines – Rescue Task Force #1 and Rescue Task Force #2
- (4) ALS Rescues – RTF or Medical Group
- (2) BLS Rescues – RTF, Transportation, or Medical Group





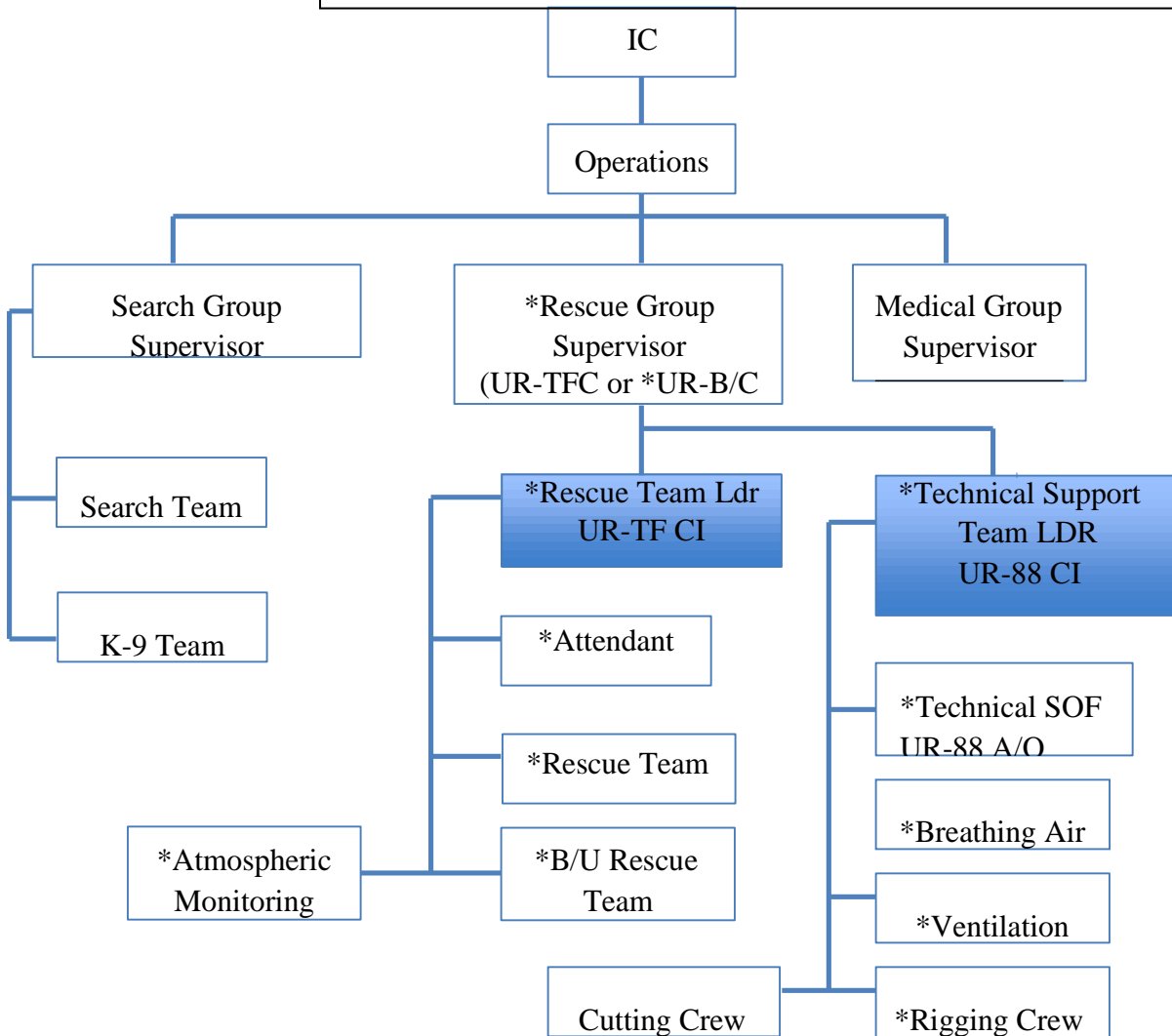
METRO RAIL REFERENCE

Considerations:	Fire Companies	Battalion
<ul style="list-style-type: none"> • EMP Panel • Communications with ROC • # and location of cars involved • # of patients • 3rd rail 750 Volts • Emergency Trip Station at Platform Level • Emergency Exits to street level GREEN Signs • 125# psi standpipes 2 ½ outlet every 250' • Emergency Fans by ROC • MTA Supervisor will get Rescue Train • Haz-Mat Response 	<ul style="list-style-type: none"> • E 1 F/A • T 1 LOBBY • E 2 Station Division at Platform • T 2 Tunnel Division • E 3 F/A Opposite Tunnel • T 3 Station Division Opposite Tunnel • E 4 Report to Tunnel Division Rescue/EMS • SQ Air Monitor Tunnel Division • RA 1 Medical Group (Open Comms) • RA 2 	<ol style="list-style-type: none"> 1. I/C 2. Tunnel Branch @ Platform 1st Station 3. Tunnel Division (Incident Scene) 4. Logistics 5. Medical Branch "Comms" 6. Tunnel Division (Platform Level 2nd Station) 7. Division (Platform Level 1st Station) <p>Groups: Safety, Rescue, Evac, Ventilation, Haz-Mat</p> <ol style="list-style-type: none"> 8. Battalion 13 to ROC (323) 563-5022



TECHNICAL RESCUE REFERENCE

- Initial Responsibilities**
- D Determine Complexity
 - D Develop Situational Awareness
 - D Determine Operational Risk Assessment (Risk vs Gain)
 - D Determine Tactical Priorities and Develop Incident Objectives
 - D Assume Command
 - D Order Resources
 - D Develop Strategy (IAP)
 - D Prioritize Deployment of Resources



Prioritize Deployment of Resources

- 1st BC = IC
- 2nd BC = *Rescue Group Supervisor or Operations
- UR-BC = *Rescue Group Supervisor or *Safety Officer
- UR-TFC = *Rescue Group Supervisor
- UR-CI = *Rescue Team Leader/Search Team Leader
- UR-88 CI = *Technical Support Team Leader
- UR-88 AO = *Technical Safety Officer



EVENT MEDICAL INCIDENT LOG

(R) – RESOURCE (s)
(H) – Hospital Number
(T) – Time Available

	TIME	INC. #	ADDRESS/LOCATION	INCIDENT TYPE	BIB#	RESOURCE(s) DISPATCHED			TRANS	AVI
1									(R) (H)	(R) (T)
2									(R) (H)	(R) (T)
3									(R) (H)	(R) (T)
4									(R) (H)	(R) (T)
5									(R) (H)	(R) (T)
6									(R) (H)	(R) (T)
7									(R) (H)	(R) (T)
8									(R) (H)	(R) (T)
9									(R) (H)	(R) (T)
10									(R) (H)	(R) (T)
11									(R) (H)	(R) (T)
12									(R) (H)	(R) (T)
13									(R) (H)	(R) (T)
14									(R) (H)	(R) (T)
15									(R) (H)	(R) (T)



EVENT MEDICAL INCIDENT LOG

(R) – RESOURCE (s)
(H) – Hospital Number
(T) – Time Available

	TIME	INC. #	ADDRESS/LOCATION	INCIDENT TYPE	BIB#	RESOURCE(s) DISPATCHED			TRANS	AVI
16									(R) (H)	(R) (T)
17									(R) (H)	(R) (T)
18									(R) (H)	(R) (T)
19									(R) (H)	(R) (T)
20									(R) (H)	(R) (T)
21									(R) (H)	(R) (T)
22									(R) (H)	(R) (T)
23									(R) (H)	(R) (T)
24									(R) (H)	(R) (T)
25									(R) (H)	(R) (T)
26									(R) (H)	(R) (T)
27									(R) (H)	(R) (T)
28									(R) (H)	(R) (T)
29									(R) (H)	(R) (T)
30									(R) (H)	(R) (T)

